

Number Question Type

A Number question is a short-answer, open-text field with validation that ensures entries are numbers.


When To Use It

Use Number questions to collect number responses from your respondents. For example, age or street number.

Validation Options

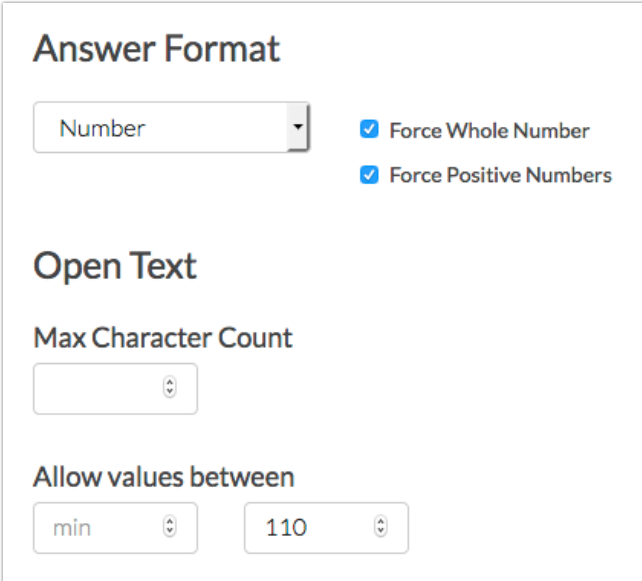
On the Validation tab, you can choose from a number of different validation options including:

- Force Whole Number
- Force Positive Numbers
- Max Character Count
- Min and/or Max values



What is your age?

Check it out in an [example survey!](#)
[Add a survey](#) with this question to your account!



Answer Format

Number Force Whole Number
 Force Positive Numbers

Open Text

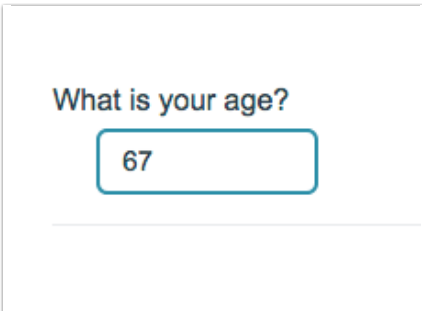
Max Character Count

Allow values between

min

Survey Taking

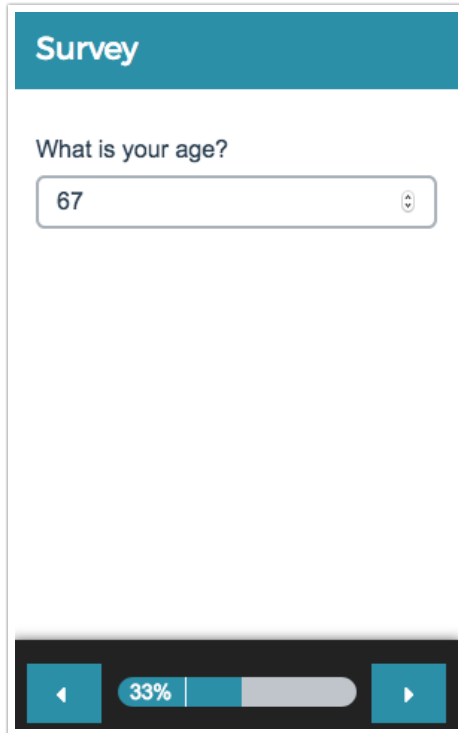
On a desktop and most laptops, the Number question type looks like so.



What is your age?

When optimized for mobile devices the Number question type looks very similar.

By default, survey questions show one at a time on mobile devices to prevent the need for scrolling on smaller screens. You can turn off this [one-at-a-time interaction](#) if you wish.



Survey

What is your age?

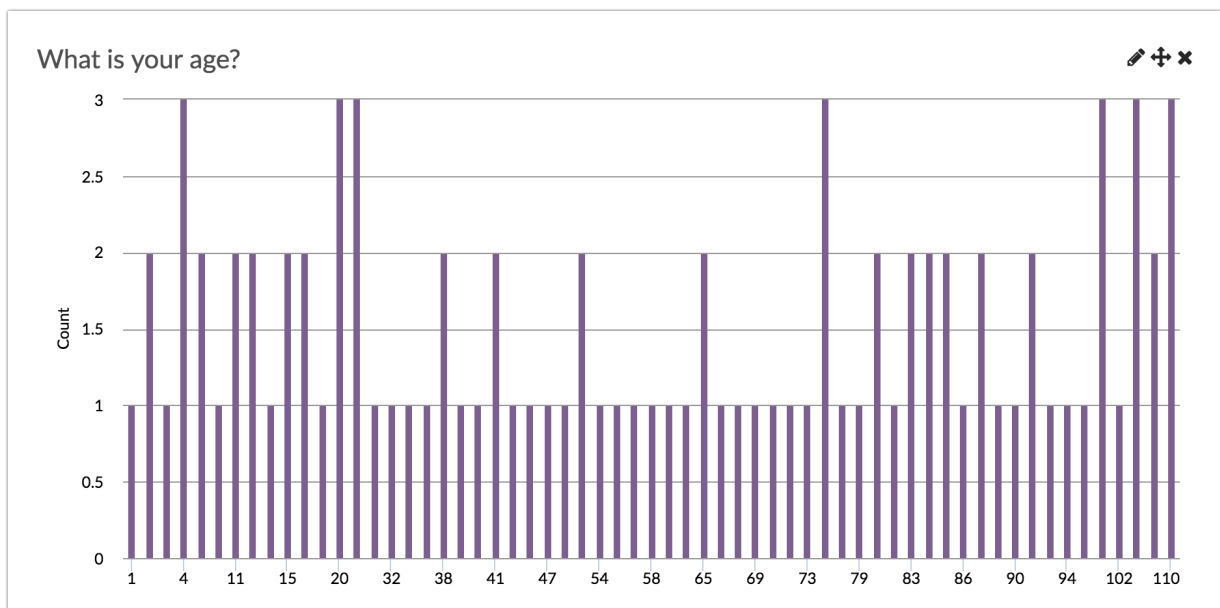
67

33%

Reporting

Standard Report

In the Standard Report, Number questions report as a Histogram.



- + See additional compatible chart types
- + See what other report types are compatible

Legacy Summary Report

Number questions report as an Appendix element in the Legacy Summary Report.

1. What is your age?	
Count	Response
2	17
2	18
1	20
1	21
2	22

Exporting

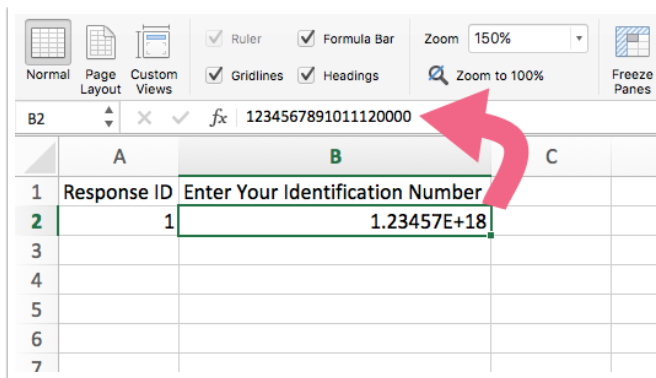
In the [CSV/Excel export](#), the data is displayed in a single column within the spreadsheet.

A Note on Exporting

If you are collecting numbers that contain more than 15 digits, you will run into the following Microsoft Excel limitation:

<https://support.microsoft.com/en-us/help/269370/last-digits-are-changed-to-zeroes-when-you-type-long-numbers-in-cells>

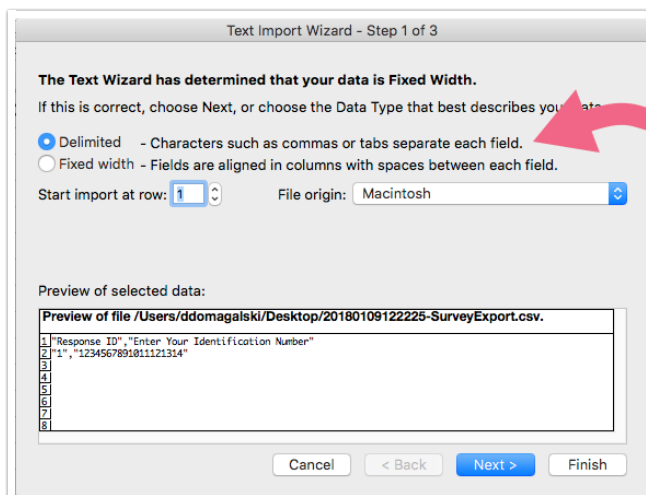
If a respondent entered *1234567891011121314* into the Number question, you are likely to see it displayed as follows in Excel: *1.23457E+18* or *1234567891011120000*. Note the four zeros at the end.



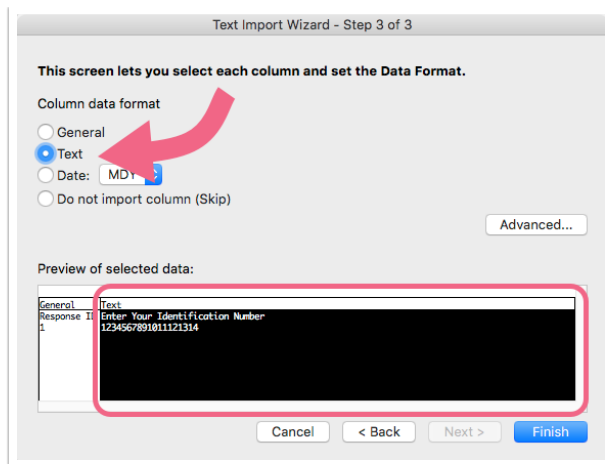
You can work around this Microsoft Excel limitation within Excel. To do so follow the below steps.

Note: Depending on your version of Microsoft Excel, the steps for this may vary.

1. Within Excel, click **File > Import**.
2. On the next screen, select **CSV file** as the type of file you want to import.
3. Select your Alchemer export file when prompted. You will then be taken to the **Text Import Wizard**.
4. On **Step 1** of the **Import Wizard**, select **Delimited** from the available options. Click **Next**.

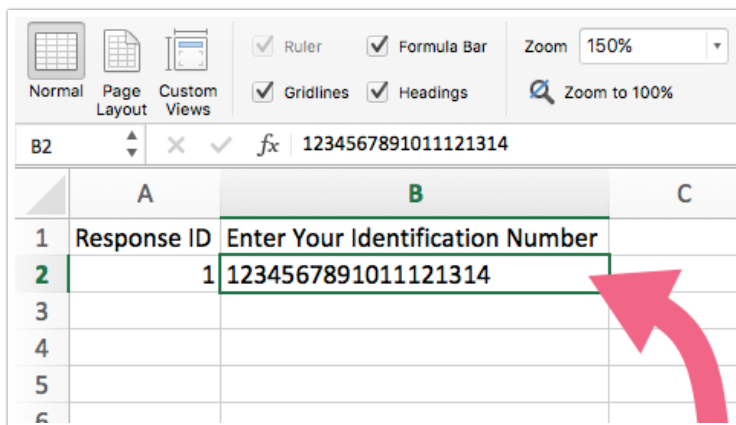


5. On the next screen, confirm the **Delimiters** that you want to use. **Tab** and **Comma** will likely be selected by default. Unless you have a need to change this, click **Next**.
6. On the last step of the wizard, locate the column that contains your 15+ digit number and click on this column to select it.
 - a. Once selected, change the **Column data format** to **Text**.



b. Click **Finish** to complete the import process. You will be asked to indicate whether you want to import into your existing sheet or a brand new spreadsheet.

7. Now the 15+ number entered by your respondent will show in full.



Consideration Before Using the Number Question

The validation that is applied to the Number question by default allows for things like \$,% , etc. If you wish to only allow survey respondents to record strictly numbers you'll need to instead use a [Textbox Question](#) with Regex Validation. Check out our [Validating Textbox Answer Formats](#) to learn more!

Net Promoter[®], NPS[®], NPS Prism[®], and the NPS-related emoticons are registered trademarks of Bain & Company, Inc., Satmetrix Systems, Inc., and Fred Reichheld. Net Promoter ScoreSM and Net Promoter SystemSM are service marks of Bain & Company, Inc., Satmetrix Systems, Inc., and Fred Reichheld.

Related Articles